

Tracker in Motion from BMS – User Manual



GL100 GPS-GSM Tracking Device
©2011 BMS, Inc
Melbourne, FL USA



Contents

Tracker in Motion from BMS – User Manual	1
Contents	2
Contents of Package	3
Buttons and Functions	4
Turn on and LED.....	5
Getting Started	6
Software Interface.....	7
Toolbar	8
Sending a Command	9
Administrative Settings.....	11
Zone Settings – Geo Fence.....	12
Zone Alerts.....	13
History	14
SMS Mobile Tracking and Alerting.....	15
Add My Locations and SMS Commands Account.....	16

Contents of Package

1. Device



2. Wall Charger



3. SIMM Card (Ships pre installed into Device)



4. Carrying Case / Holster



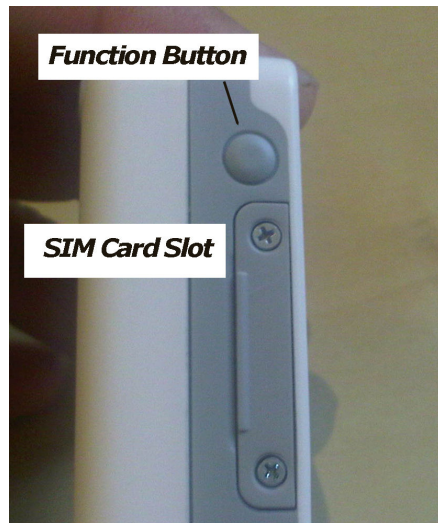
Buttons and Functions



On Off Button – Press for two seconds



USB Charge Port



Function Button and SIM Card

Turn on and LED

LED 1

RED

Sequence 1: solid means power is low

Sequence 2: slow flash means it is charging

GREEN

Sequence 1: solid means charge completed

Sequence 2: after inserting the serial port, this LED will illuminate for 8 seconds which means it is checking battery status.

BLUE

SOS – if the panic button is pressed the light will be solid.

LED 2

RED

Device is on or the device received a valid configuration command

GREEN

Sequence 1: fast flash means GSM network searching

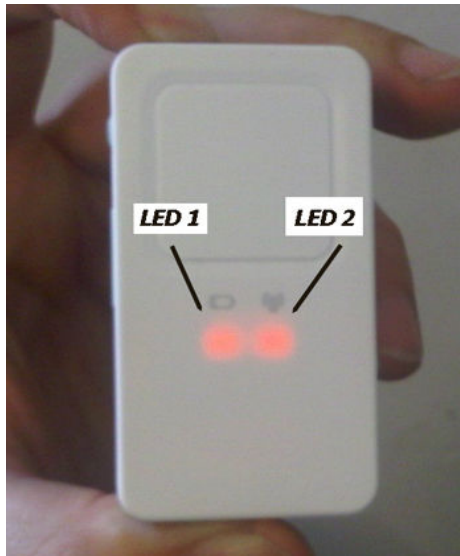
Sequence 2: slow flash means GSM network is registered

Sequence 3: solid means SIM pin is locked

BLUE

Fast flash means the GPS tracker is acquiring a fix.

It will stay solid for 2 seconds when GPS is fixed.



Getting Started

Step 1.

Remove device from packaging and charge for 2 hours.

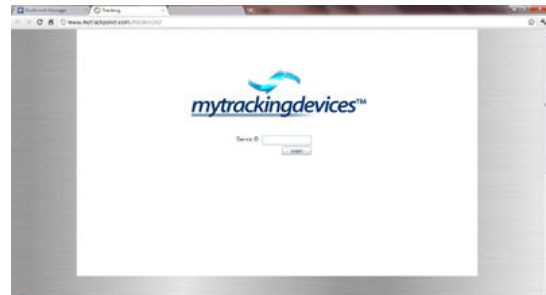
Step 2.

Switch device on and position it with a full, clear view of the sky.

Step 3.

Go to

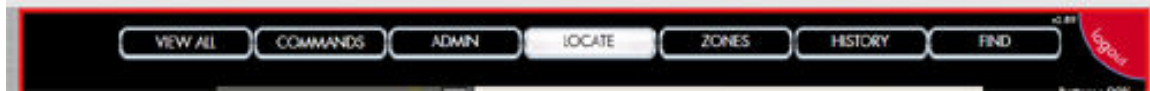
<http://www.mytrackpanel.com/mydevices/> or the "log on to My Tracking Devices link on <http://www.bms.net/> and login using the device id or username and password supplied.



Software Interface

The screenshot displays the Tracker In Motion software interface. At the top, there are navigation tabs: VIEW ALL, COMMANDS, ZONES, HISTORY, and FIND. A dropdown menu for 'tracker' is set to 'BMS332531'. The main map area shows a road network with a green location marker. Callouts point to various features: 'Choose device' points to the dropdown menu; 'Last location' points to the location text; 'GPS Lat Lon location' points to the latitude and longitude coordinates; 'Device location on map' points to the green marker on the map; and 'Pay as you go credits' points to the 'sms credits' and 'position credits' fields. On the left, a speedometer shows 78 mph, and the last report time is 3/15/2011 19:00:20. On the right, there are status indicators for Device Off, Zones On, Alarm Off, Not Charging, and Battery OK, along with a 'login!' button.

Toolbar



View All

Shows all devices on the map

Commands

Select this menu to send instructions to the device such as *stop tracking or track every 5 minutes*

Admin

Select this menu to change the device name, alert phone numbers and device map icon

Locate

Sends a one-time location request

Zones

Add 'geofences' to alert you when device enters or leaves particular areas

History

View full movements of the device for any period in time and see a replay on the map

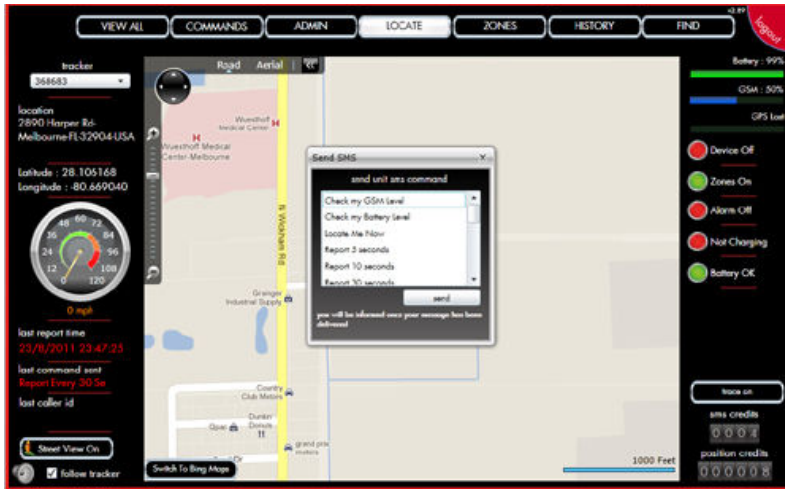
Find

Search for a location anywhere in the world

Logout

Exit your account

Sending a Command



Check My GSM Level

Updates the software with current device GSM signal level

Check My Battery Level

Updates the software with current device battery level

Locate Me Now

Send one-time location request

Reporting Intervals of: 5, 10, 30, 60, 120, 240 seconds. 10, 15, 30 minutes. 1, 2, 4 hours.

Changes the reporting to one of the above settings

Stop Reporting

Tells the device to stop transmitting locations

Reboot Device

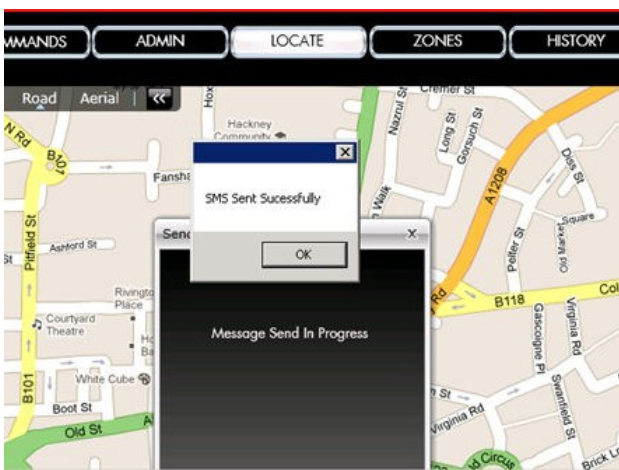
Resets the device

Vehicle Mode

Will only transmit locations if device is moving faster than 8 mph

Walking mode

Will only transmit locations if device is moving faster than 3 mph



Visual Confirmation

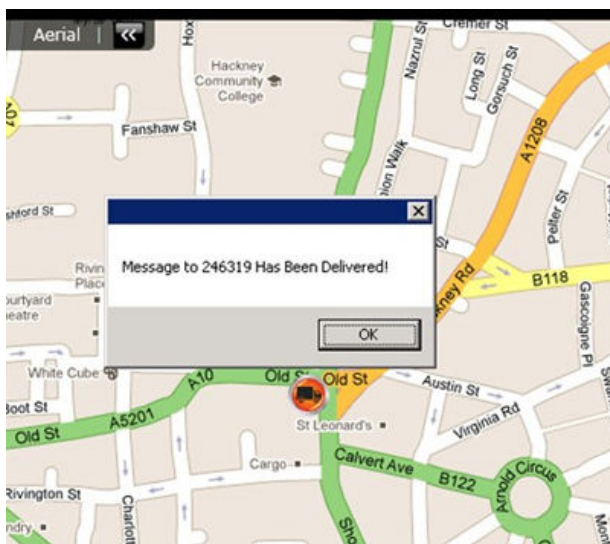
After sending a command to the device, the system will provide you with the following visual feedback:

SMS sent successfully

The system has sent the SMS command

Message to <device name> has been delivered

The device has received the message and sent back an acknowledgement message



Administrative Settings



Change Device Name

Enter any name in here relevant to your operation

Device Contacts

Input number to which SMS messages should be sent in case the panic button is pressed or the battery has low power.

Date Format

Select the appropriate date format you use

Miles or KM

Select the most appropriate unit

of measurement

Time Zone

Select your time zone

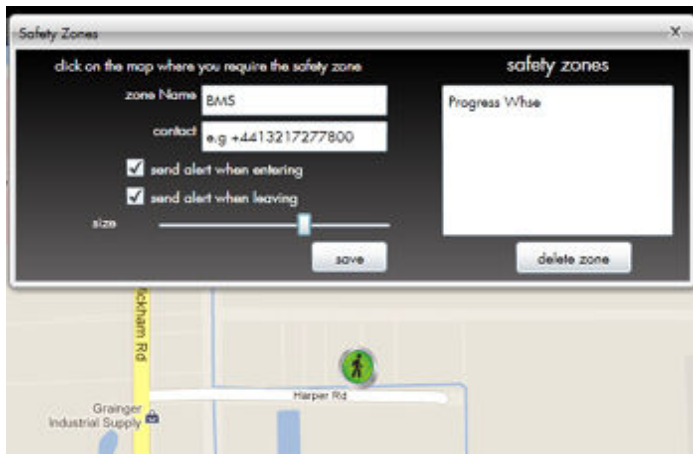
Language

Select your desired language for the software

Device Icon

Select an icon to display your device on the map

Zone Settings – Geo Fence



Use 'zones' to set geo-fences that will alert you when the device enters or leaves the selected area.

Step 1

Click on the map where you want the center of the zone to be. The size of the circle can be adjusted using the slider inside

the settings window.

Step 2

Give the zone a name and input the phone number to receive the SMS alert. Add multiple numbers by using '/' as a separator.

Step 3

Check the relevant box to specify if you want to be alerted on entering or leaving the zone.

Step 4

Move the slider to determine the diameter of the zone.

Step 5

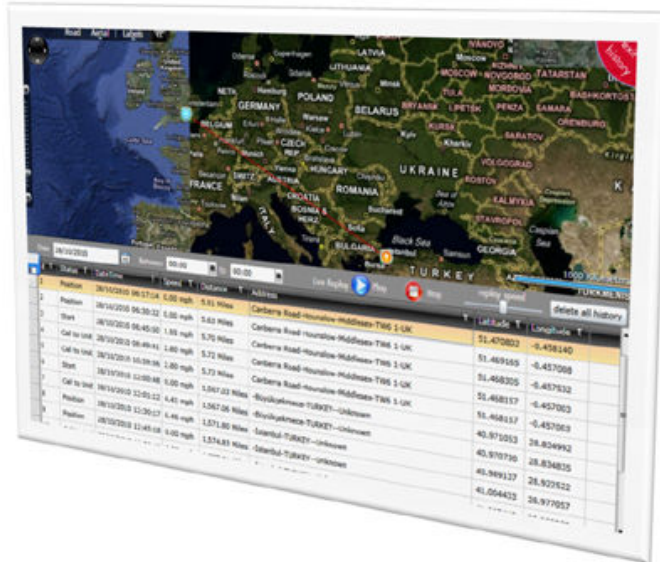
Click 'save'

Zone Alerts



When the zones have been set up correctly, you will receive a SMS message to your cell phone similar to the one shown here.

History



Use 'HISTORY' to view previous movements of the tracking device.

Step 1

Choose the day you want to view.
Choose the hours from and to.

Step 2

If you wish, click the 'play' button to view a live replay of the device movements.

Also:

You can view any particular point by selecting the desired row in the table show below the map.

You can also EXPORT data to Word or Excel by clicking the 'disk' icon.



SMS Mobile Tracking and Alerting

Making A Location Request From Mobile Phone

Step 1:

From any cell phone, call the phone number associated with the device. This number can be found inside the admin panel or written on the packaging of the device.

Step 2:

When you call the device, the call will automatically terminate after a few seconds. Approximately 60 seconds later you will receive a SMS.

Step 3:

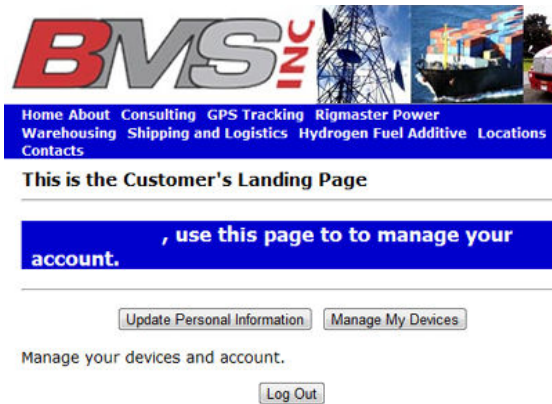
Click on the link inside the message to see a map of where the device is located.

Add My Locations and SMS Commands Account

To location reports and SMS commands log on to <https://www.bms.net/login.aspx> by using the email address and password you used to set up your BMS.net account.



Click the manage my devices



Select a Location/SMS Command package

Select the device(s) you want to refill.

Click the submit button

Proceed through the cart check out procedure.

Select	Prod ID	Description	Details	Price
<input checked="" type="checkbox"/>	708	Tracker in Motion Locates and Messages Starter Pack	2,500 location reports with 200 SMS messages to the tracker	\$140.00
<input type="checkbox"/>	710	Tracker in Motion 2,500 Locates Pack	Location messages never expire	\$90.00

Tracker ID	Tracker Model Number	Tracker Sim Card	Device SN
<input checked="" type="checkbox"/> 46	btim001	11234	1234
<input checked="" type="checkbox"/> 47	btim001	56+4+4+	16+654
<input checked="" type="checkbox"/> 48	btim001	979879879	6565464
<input checked="" type="checkbox"/> 49	btim001	64646454156	13465468
<input checked="" type="checkbox"/> 50	btim001	7845616	6464584
<input checked="" type="checkbox"/> 51	btim001	24567	898512
<input checked="" type="checkbox"/> 52	btim001	987841	16542123
<input checked="" type="checkbox"/> 53	btim001	2446878	985646161
<input checked="" type="checkbox"/> 54	btim001	98744654	121654987
<input checked="" type="checkbox"/> 55	btim001	988419198798	+56+56+2